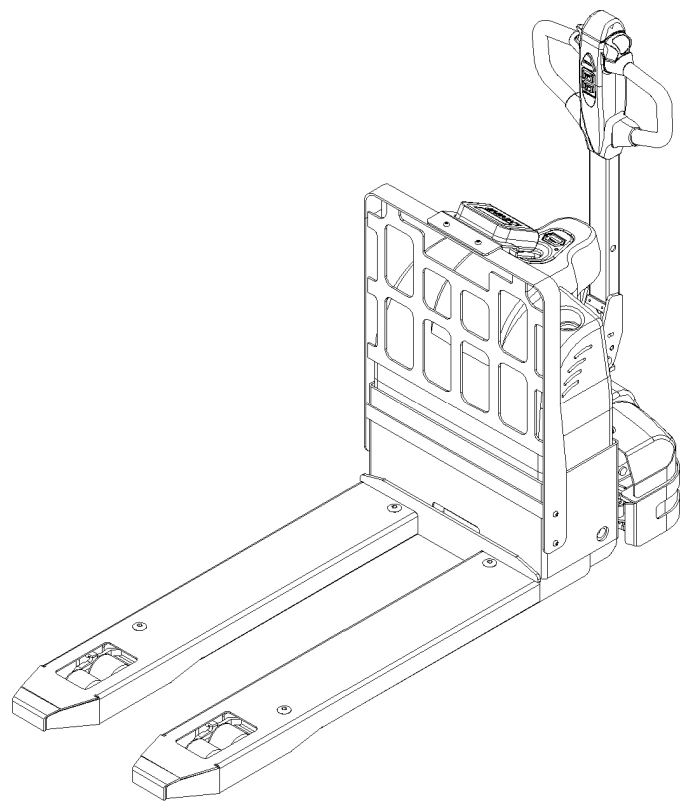


INSTRUCTION HANDBOOK

Electric Pallet Truck



WARNING

Do not use the pallet truck before reading and understanding these operating instructions.

- **Please check the designation of your present type at the last page of this document as well as on the ID-plate.**
- **Keep for future reference.**

Version 05/2016

EPT15SC-SMS-001-EN

FOREWORD

Before operating the truck, read this ORIGINAL INSTRUCTION HANDBOOK carefully and understand the usage of the truck completely. Improper operation could create danger.

This handbook describes the usage of different electric pallet trucks. When operating and servicing the truck, make sure, that it applies to your type.

Keep this handbook for future reference. If this or the warning/caution labels are damaged or got lost, please contact your local dealer for replacement.

This truck complies with the requirements according to EN 3691-1 (Industrial trucks- safety requirements and verification, part 1), EN 12895 (Industrial trucks- electromagnetic compatibility), EN 12053 (Safety of industrial trucks-test methods for measuring noise emissions), EN 1175 (Industrial truck safety – electrical requirements), assumed the truck is used according to the described purpose.

The noise level for this machine is 67 dB(A) according to EN 12053.

ATTENTION:

- Environmentally hazardous waste, such as batteries, oil and electronics, will have a negative effect on the environment, or health, if handled incorrectly.
- The waste packages should be sorted and put into solid dustbins according to the materials and be collected disposal by local special environment protection bureau. To avoid pollution, it's forbidden to throw away the wastes randomly.
- To avoid leaking during the use of the products, the user should prepare some absorbable materials (scraps of wooden or dry duster cloth) to absorb the leaking oil in time. To avoid second pollution to the environment, the used absorbable materials should be handed in to special departments in terms of local authorities.
- Our products are subject to ongoing developments. Because this handbook is only for the purpose of operating /servicing the pallet truck, therefore please have understanding, that there is no guarantee out of particular features out of this handbook.



NOTE: On this manual, the left sign means warning and danger, which can lead to death or serious injury if not followed.

Copyright

The copyright remains with the company, mentioned on the CE- certificate at the end of this document.

TABLE OF CONTENTS

1. CORRECT APPLICATION	4
2. DESCRIPTION OF THE PALLET TRUCK.....	5
a. Overview of the main components	5
b. Main technical data	5
c. Description of the safety devices and warning labels	7
d. Identification plate	7
3. WARNINGS, RESIDUAL RISK AND SAFETY INSTRUCTIONS	8
4. COMMISSIONING, TRANSPORTING, DECOMMISSIONING	9
a. Commissioning	9
b. Lifting/transportation	9
c. Decommissioning.....	10
5. DAILY INSPECTION.....	10
6. OPERATING INSTRUCTIONS	10
a. Parking	11
b. Lifting.....	11
c. Lowering.....	11
d. Travelling.....	11
e. Steering	12
f. Braking	13
g. Malfunctions	13
h. Emergency	13
7. Scale parameter setting and using.....	13
a. Technical dates	13
b. Usage of pallet truck with scale	14
8. BATTERY CHARGING AND REPLACEMENT	20
a. Replacement.....	21
b. Battery indicator	22
c. Charging.....	22
9. REGULAR MAINTENANCE.....	23
a. Maintenance checklist.....	23
b. Lubricating points	25
c. Check and refill hydraulic oil	25
d. Checking electrical fuses	26
10. TROUBLE SHOOTING	26
11. WIRING/ CIRCUIT DIAGRAM.....	28
a. Electrical circuit diagram	28
b. Hydraulic circuit.....	29
12. DECLARATION OF CONFORMITY (valid, if sold within the EU)	30

1. CORRECT APPLICATION

It is only allowed to use this electric pallet truck according to this instruction handbook.

The trucks in this handbook described are self propelled electric power pallet trucks, with electrically or manually operated low height lifting function. The trucks are designed to lift, lower and transport palletized loads.

A wrong usage can cause human injuries or can damage equipment.

The operator/the operating company has to ensure the correct usage and has to ensure, that this pallet truck is used only by staff, which is trained and authorized to use this truck.

The pallet truck has to be used on substantially firm, smooth, prepared, level and adequate surfaces. The truck is intended to be used for indoor applications with ambient temperatures between +5°C and +40°C and for light duty applications without crossing permanent obstacles or potholes. Operating on ramps is not allowed. While operating, the load must be placed approximately on the longitudinal centre plane of the truck.

Lifting or transporting people is forbidden.

If used on tail lifts or loading ramps, please ensure that these are used correctly according to the operating instructions.

The capacity is marked on capacity sticker as well on the Identification plate. The operator has to consider the warnings and safety instructions.

Operating lighting must be minimum 50 Lux.

Modification

No modifications or alterations to this pallet truck which may affect, for example, capacity, stability or safety requirements of the truck, shall be made without the prior written approval of the original truck manufacturer, its authorized representative, or a successor thereof. This includes changes affecting, for example braking, steering, visibility and the addition of removable attachments. When the manufacturer or its successor approve a modification or alteration, they shall also make and approve appropriate changes to capacity plate, decals, tags and operation and maintenance handbooks.

By not observing these instructions, the warranty becomes void.

2. DESCRIPTION OF THE PALLET TRUCK

a. Overview of the main components

- 1 Multifunction tiller
- 2 Discharge indicator and charging indicating LED
- 3 Combined emergency button
- 4 Main cover
- 5 Fork
- 6 Load wheels
- 7 Charging cable
- 8 Coaming
- 9 Drive motor cover
- 10 Hydraulic cylinder
- 11 Drive wheel
- 12 Casters
- 13 Safety (belly) button
- 14 Drive control switch (butterfly-switch)
- 15 Sensor assembly

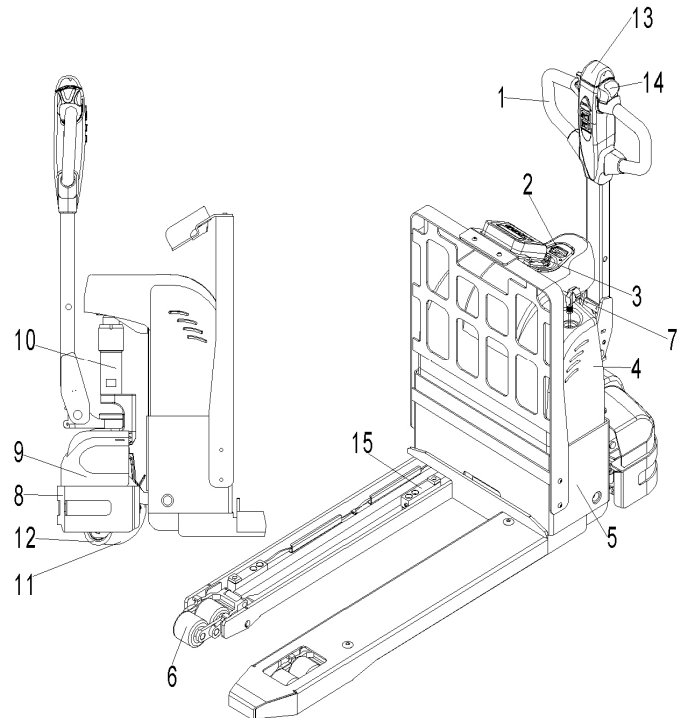


Fig. 1: Overview of the man components

b. Main technical data

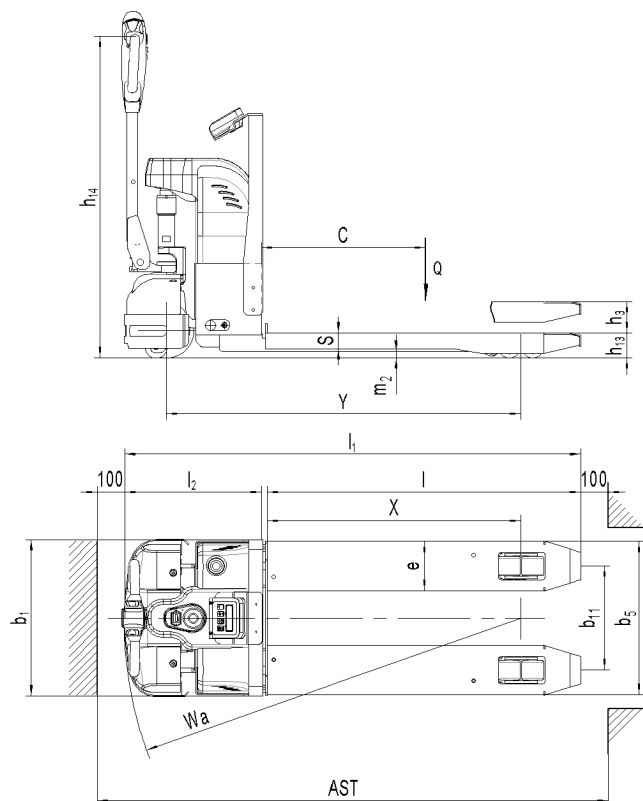


Fig. 2: Technical data

Table 1: Main technical data for standard version

Type sheet for industrial truck acc. to VDI 2198				
Distinguishing mark	1.2	Manufacturer's type designation		EPT15SC
	1.3	Drive		electric
	1.4	Operator type		pedestrian
	1.5	Load Capacity / rated load	Q (t)	1.5
	1.6	Load centre distance	c (mm)	600
	1.8	Load distance ,centre of drive axle to fork	x (mm)	946
	1.9	Wheelbase	y (mm)	1293
Weight	2.1	Service weight	kg	235
	2.2	Axle loading, laden front/rear	kg	515/1220
	2.3	Axle loading, unladen front/rear	kg	170/65
Tyres, chassis	3.1	Tires		Polyurethane (PU)
	3.2	Tire size,front	Ø x w (mm)	Ø 200×70
	3.3	Tire size,rear	Ø x w (mm)	Ø 80×70
	3.4	Additional wheels(dimensions)	Ø x w (mm)	Ø80×30
	3.5	Wheels,number front/rear(x=driven wheels)		1x +2/ 4
	3.6	Tread, front	b ₁₀ (mm)	410
	3.7	Tread, rear	b ₁₁ (mm)	380
Dimensions	4.4	Lift height	h ₃ (mm)	115
	4.9	Height of tiller in drive position min./ max.	h ₁₄ (mm)	800 / 1170
	4.15	Height, lowered	h ₁₃ (mm)	90
	4.19	Overall length	l ₁ (mm)	1675
	4.20	Length to face of forks	l ₂ (mm)	510
	4.21	Overall width	b ₁ (mm)	574
	4.22	Fork dimensions	s/e/l (mm)	56/180/1143
	4.25	Distance between fork- arms	b ₅ (mm)	560
	4.32	Ground clearance, centre of wheelbase	m ₂ (mm)	23
	4.34	Aisle width for pallets 800X1200 lengthways	Ast (mm)	1950
	4.35	Turning radius	Wa (mm)	1460
Performance data	5.1	Travel speed, laden/ unladen	km/h	4.2 / 4.6
	5.2	Lift speed, laden/ unladen	m/s	0.03 / 0.053
	5.3	Lowering speed, laden/ unladen	m/s	0.049 / 0.036
	5.8	Max. gradeability, laden/ unladen	%	4 / 10
	5.10	Service brake		electromagnetic
Electric- engine	6.1	Drive motor rating S2 60min	kW	0.45
	6.2	Lift motor rating at S3 10%	kW	0.8
	6.3	Battery acc. to DIN 43531/ 35/ 36 A, B, C, no		no
	6.4	Battery voltage, nominal capacity K5	V/ Ah	2x12V / 64
	6.5	Battery weight	kg	48
	6.6	Energy consumption acc. to VDI cycle	kWh/h	0,39
Addition data	8.1	Type of drive control		DC speed Control
	8.4	Sound level at driver's ear acc. to EN 12053	dB(A)	69

C. Description of the safety devices and warning labels

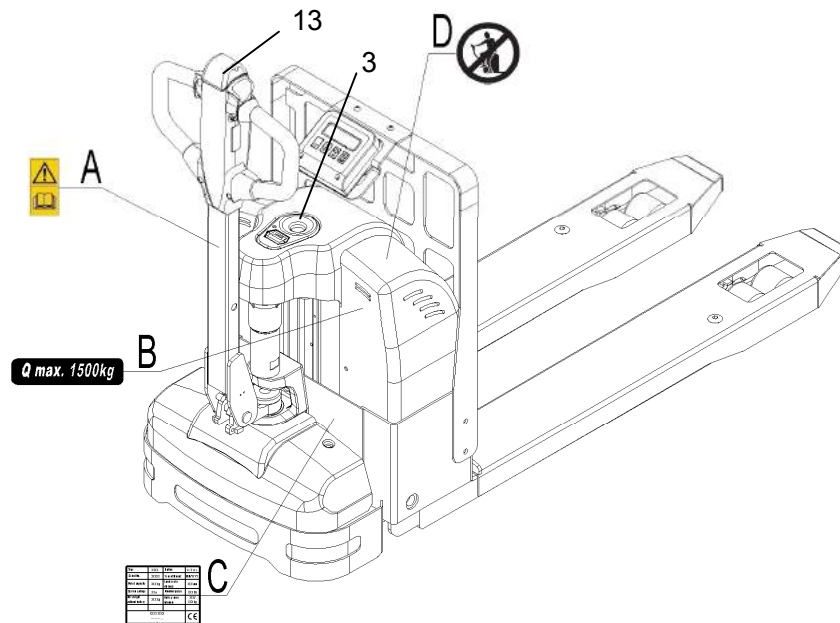


Fig. 3: Safety and warning labels

- | | |
|---|-------------------------------|
| A Sticker to read and follow this instruction | D 'No passengers' decal |
| B Capacity sticker | (3) Combined emergency switch |
| C Identification plate (ID-plate) | (13) Safety (belly) button |

The truck has a combined emergency switch (3) which stops all lifting-, lowering-, driving-functions and engages the failsafe electromagnetic brake when it is pushed.

By turning the pushed button anti-clockwise for 90°, the push-button can be removed and then prevent against unauthorized access. Remove this button, if you not operate the truck.

The truck is equipped with a safety (belly) button (13) which switches the driving function away from the operator, if the truck travels towards the operator and the tiller is activated in the tillers operating zone.

d. Identification plate

- | | |
|---|------------------------------------|
| 1. Designation, type | 7. Battery weight minimum/ maximum |
| 2. Serial number | 8. Rated power (KW) |
| 3. Rated capacity (kg) | 9. Load center distance |
| 4. Supply voltage (V) | 10. Manufacturing date |
| 5. Own mass without battery (self weight) | 11. Option |
| 6. Name and address of manufacturer | |

1				
	Type	xx xx	Option	xx X xxx
2	Serial No.	xxxxx	Year of Manuf.	MM/YYYY
3	Rated capacity	xxxx kg	Load center distance	xxx mm
4	System voltage	xx V	Nominal power	xx kW
5	Net weight without battery	xxx kg	Battery mass min/max	xxx / xxx kg
6	XXXX XXXX XXXXXXXX xx XXXXX / XXXXXX			CE If sold to the EU, here the place of the CE marking

Fig. 4: Identification plate

3. WARNINGS, RESIDUAL RISK AND SAFETY INSTRUCTIONS



DO NOT

- Put foot or hand under or into the lifting mechanism.
- Allow other person than the operator to stand in front of or behind the truck when it is moving or lifting/lowering.
- Overload the truck.
- Put foot in front of the wheels, injury could result.
- Lift people. People could fall down and suffer severe injury.
- Push or pull loads
- Use this truck on ramps
- Side or end load. Load must be distributed evenly on the forks.
- Use the truck with unstable, unbalanced not stable load.
- Use truck without manufacturer's written consent.
- Supply on board charger with AC voltage other than 110V or 220V.

Watch difference in floor levels when driving. Load could fall down or the truck could get uncontrollable.

Keep watching the condition of load. Stop operating the truck if load becomes unstable.

Brake the truck and remove the battery plug(4) by pushing when sliding load on or off the truck. If the truck has any malfunctions, follow chapter 6.

Practice maintenance work according to regular inspection. This truck is not designed to be water resistant. Use the truck under dry condition. Prolonged continuous operation might cause damage of the power pack. Stop operation if temperature of hydraulic oil is too high.

- When operating the electric pallet truck, the operator has to wear safety shoes.
- The truck is intended to be used for indoor applications with ambient temperatures between +5°C and +40°C.
- The operating lighting must be minimum 50 Lux.
- It is not allowed to use the truck on ramps.
- To prevent unintended sudden movements when not operating the tuck (i.e. from another person, etc.) switch of f the truck when not operating it.

4. COMMISSIONING, TRANSPORTING, DECOMMISSIONING

a. Commissioning

Table 2: Commissioning data

Type	EPT 15SC
Commissioning weight [kg]	Appr. 260 kg
Dimensions [mm]	1750x700x900

After receiving our new pallet truck or for re-commissioning you have to do following before (firstly) operating the truck:

- Check if all parts are included and not damaged
- Eventually installation of the multifunction tiller
- Eventually installation and charging the batteries (follow chapter 8)
- Do the work according to the daily inspections as well as functional checks.

b. Lifting/transportation

For transporting, remove the load, lower the forks to the lowest position and fix the truck safe with dedicated lifting gear according to the following figures.

Lifting



USE DEDICATED CRANE AND LIFTING EQUIPMENT
DO NOT STAND UNDER THE SWAYING LOAD
DO NOT WALK INTO THE HAZARDOUS AREA DURING
LIFTING

Park the truck securely and lash the truck according to the points identified in fig. 5.

Lift the truck to its destination and place the truck securely before removing the lifting gear.

The lashing points are according to the fig. 5.

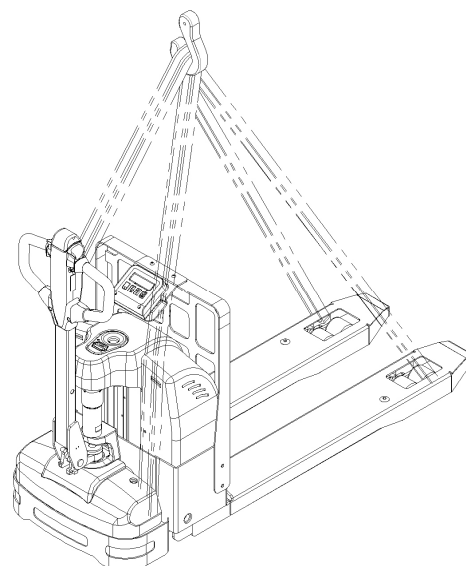


Fig 5: Lifting with a crane

Transportation



DURING TRANSPORTATION ON A LORRY OR TRUCK
ALWAYS FASTEN THE TRUCK SECURELY

Fasten the truck according to fig. 6 by slinging dedicated sides of the trucks torsion arms and fasten the other side at the transporting truck.

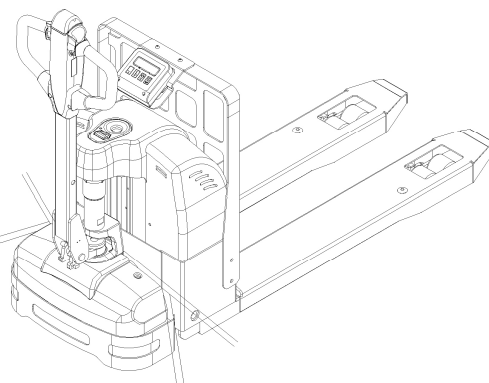


Fig 6: Fixing points

C. Decommissioning

For storage, remove the load, lower the truck to the lowest position, grease all in this handbook mentioned greasing points (regular inspection), eventually protect the truck against corrosion and dust. Remove the batteries and jack the truck safety, so that there will be no flattening after storage.

For final decommissioning hand the truck to a designated recycling company. Oil, batteries and electric components must be recycled due to legal regulations.

5. DAILY INSPECTION

This chapter describes pre-shift checks before putting the truck into operation.

Daily inspection is effective to find the malfunction or fault on this truck. Check the truck on the following points before operation.

Remove load from truck and lower the forks.



DO NOT USE THE TRUCK IF ANY MALFUNCTION IS FOUND.

- Check for scratches, deformation or cracks.
- Check if there is any oil leakage from the cylinder.
- Check the vertical creep of the truck.
- Check the smooth movement of the wheels.
- Check the function of the emergency brake by activating the emergency button.
- Check, the tiller arm-switch braking function.
- Check the lifting and lowering functions by operating the buttons.
- Check if all bolts and nuts are tightened firmly.
- Visual check if there are any broken hoses or broken electric wires.

6. OPERATING INSTRUCTIONS



BEFORE OPERATING THIS TRUCK, PLEASE FOLLOW THE WARNINGS AND SAFETY INSTRUCTIONS (CHAPTER 3).

Make sure, that the load is palletized and stable and that the daily inspection is carried out.

Insert the key of the combined emergency switch, turn it 90° clockwise and pull the battery plug up. The key can be used only on this kind of pedestrian power pallet truck. Press the horn button (16) to activate the audible warning signal.

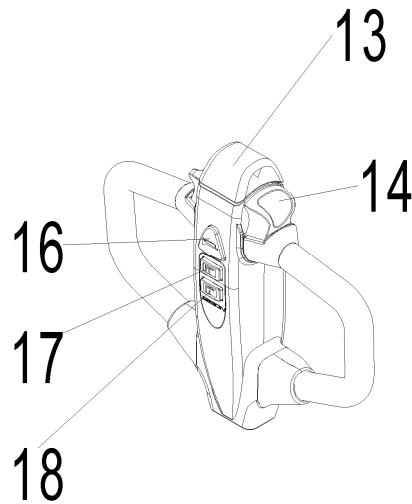


Fig. 7: Operating tiller

a. Parking



DO NOT PARK THE TRUCK ON INCLINED SURFACES

The truck is equipped with an electromagnetic failsafe stopping and parking brake. Always lower the forks fully. Press the combined emergency switch (3), turn the key 90° anti- clockwise and remove the key.

b. Lifting



DO NOT OVERLOAD THE TRUCK! THE MAXIMUM CAPACITY IS 1500 kg.

Travel with the forks lowered fully underneath the pallet until the load and press the lifting button (17) until you reached the desired lifting height.

c. Lowering

Press the lowering button (18) carefully.

Lower the load until the forks are clear of the pallet, then drive the truck carefully out of the load unit.

d. Travelling



TRAVEL ON INCLINES ONLY WITH THE LOAD FACING UPHILL.

DO NOT TRAVEL ON INCLINES MORE THAN SPECIFIED WITH THE TECHNICAL DATA.

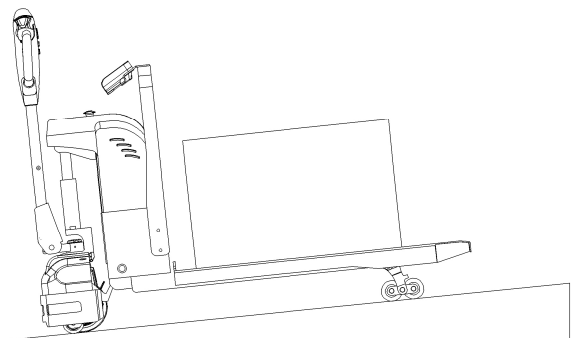


Fig 8: Load facing uphill

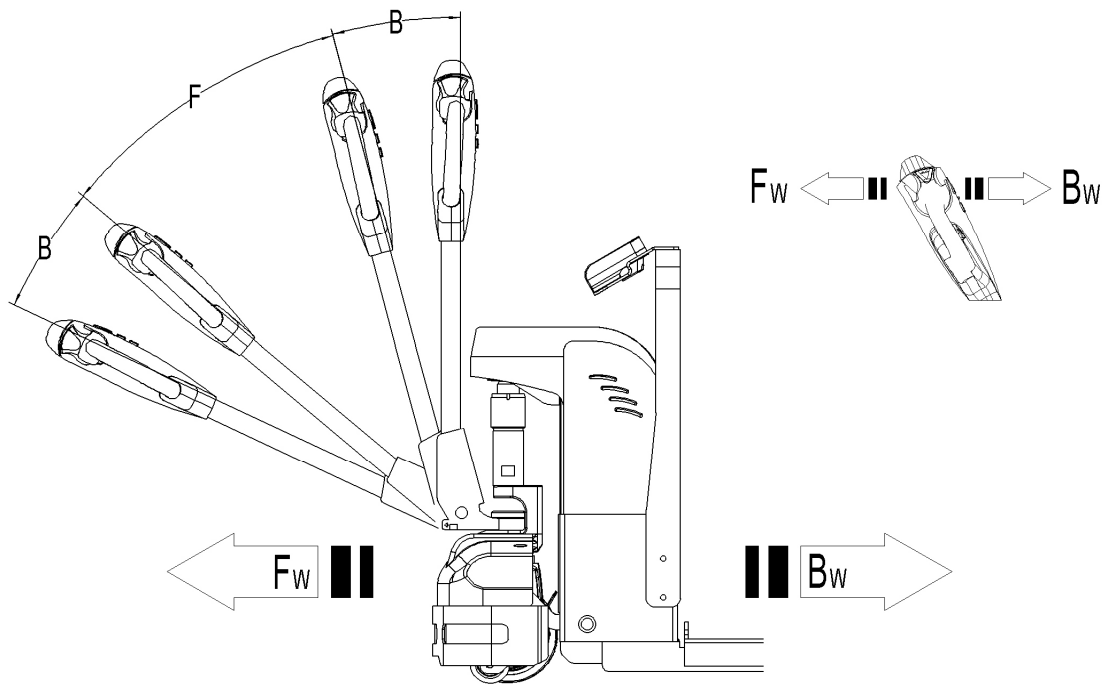


Fig. 9: Operating direction

After starting the truck by pulling the combined emergency switch (3) or insert the key and rotate 90° clockwise, move the tiller to the operating zone ('F', fig.9).

Turn the accelerator button(14) to the desired direction forward 'Fw.' or backwards 'Bw.'(fig. 9).

Control the travelling speed by moving the accelerator button(14) carefully until you reached the desired speed.

If you move the accelerator button back to the neutral position, the controller decelerates the truck until the truck stops. If the truck stopped, the parking brake will be engaged. Drive the truck carefully to the destination. Watch the route conditions and adjust the travelling speed with the accelerator- button.

e. Steering

You steer the truck by moving the tiller to the left or right side.

f. Braking



THE BRAKING PERFORMANCE DEPENDS ON THE TRACK CONDITIONS AND THE LOAD CONDITIONS OF THE TRUCK

The braking function can be activated on several ways:

- By moving the accelerator button (14) back to the initial '0' position or by releasing the button, the regenerative braking is activated. The truck brakes until it stops.
- By moving the accelerator button (14) from one driving direction directly to the opposite direction, the truck brakes regenerative until it starts travelling into the opposite direction.
- The truck brakes when the tiller is moved up or down to the braking zones ('B'). If the tiller is released, the tiller moves automatically up to the upper braking zone ('B'). The truck brakes until it stops.
- The safety (belly) button (12) prevents the operator from being crushed. If this button is activated, the truck decelerates and or starts travelling into the backwards direction ('Bw.') for a short distance and stops. Please consider, that this button also operates, if the truck is not travelling and the tiller is in the operating zone.

g. Malfunctions

If there are any malfunctions or the truck is inoperative, please stop using the truck and activate the emergency switch (3) by pushing it. If possible, park the truck on a safe area and remove the combined locking key from the combined emergency button (3).

h. Emergency

In emergencies, push the combined emergency button (3). All electrical functions will be stopped. Keep safe distance.

7. Scale parameter setting and using

a. Technical data

Table 3: Technical data

Capacity	2000kg/4500lbs
Power supply	4x1.5V "D" battery
Operating environment	Dry environment
Operating temperature	-10°C - 40°C (14°F to 104°F)
Precision	+1.0kg, load 1500kg

b. Usage of pallet truck with scale

1. Correct weighting

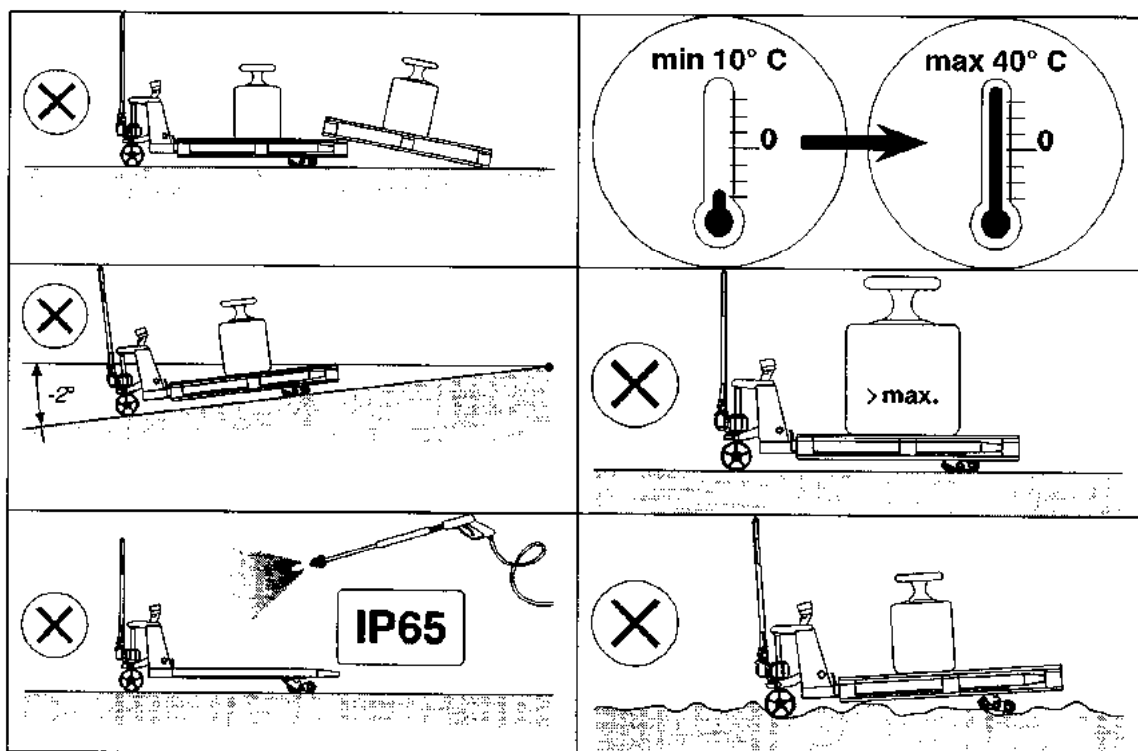
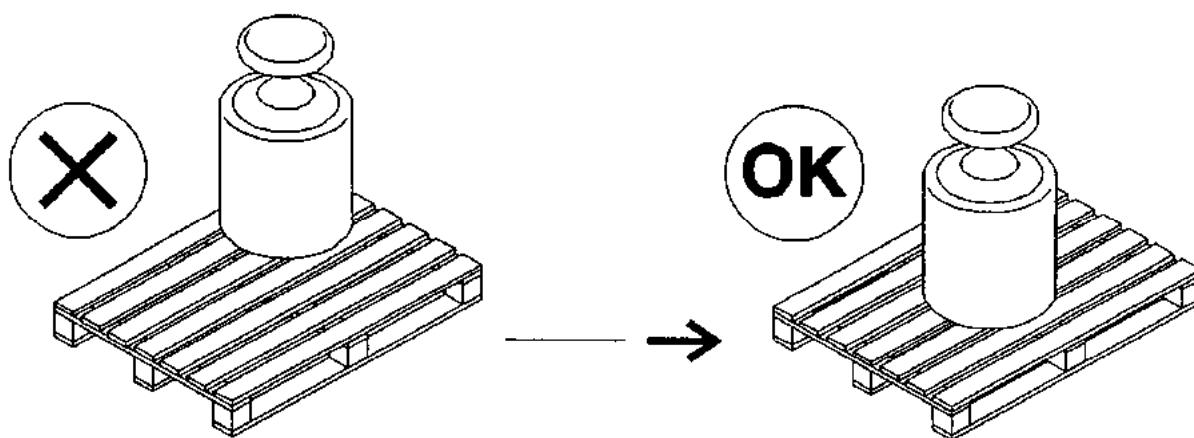


Fig 10: Correct weighting

2. Touch panel display

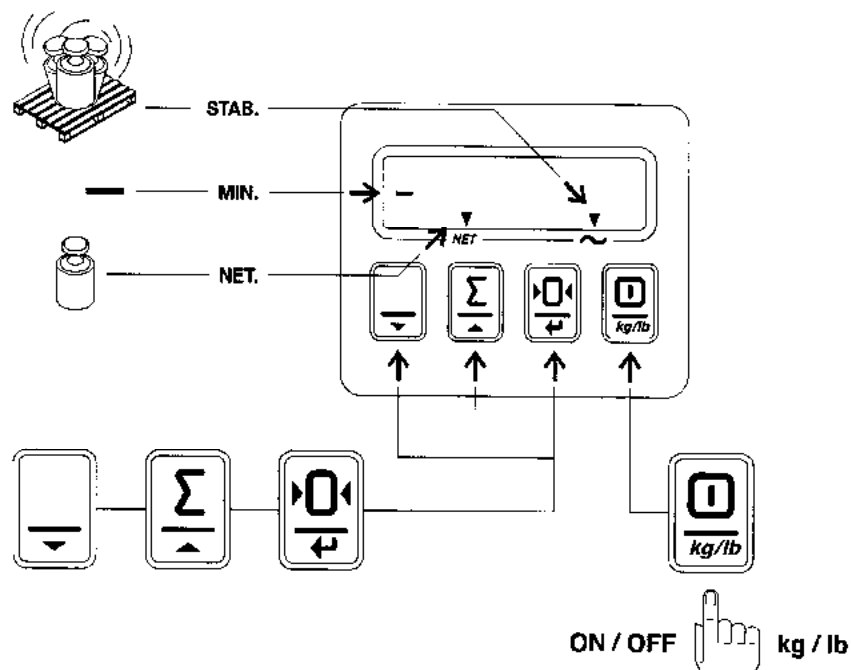


Fig11: Touch panel display

2. Net weight + Tare weight = Gross weight

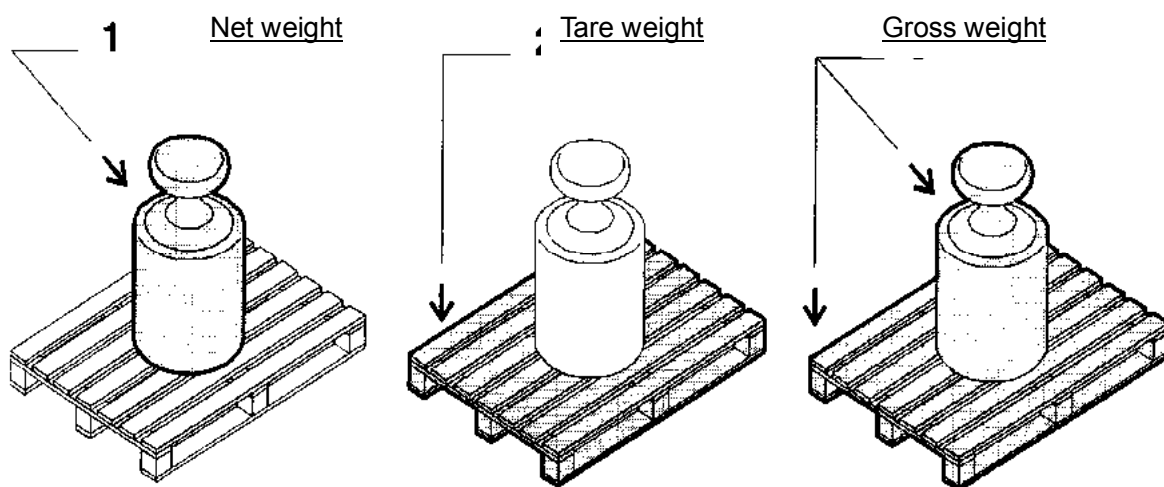


Fig. 12: Gross weight

4. ON/OFF

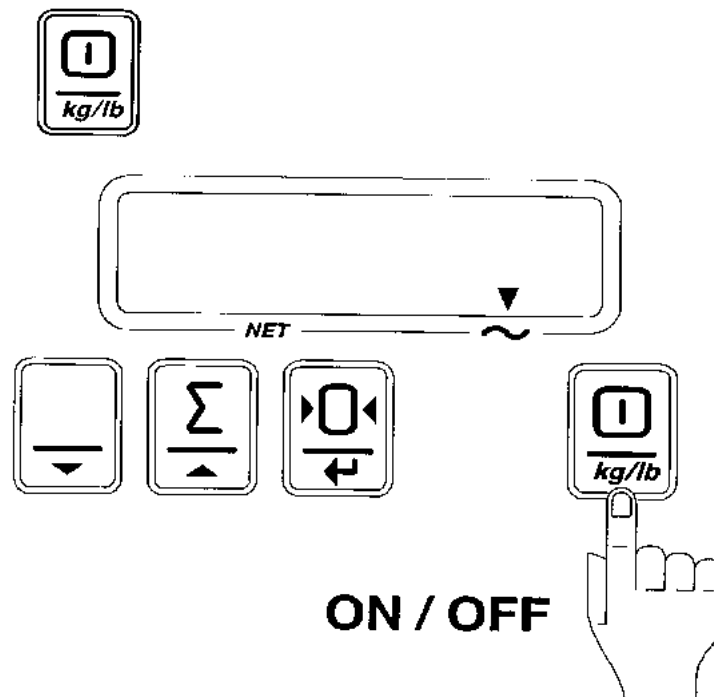


Fig. 13: ON/OFF

5. Error message

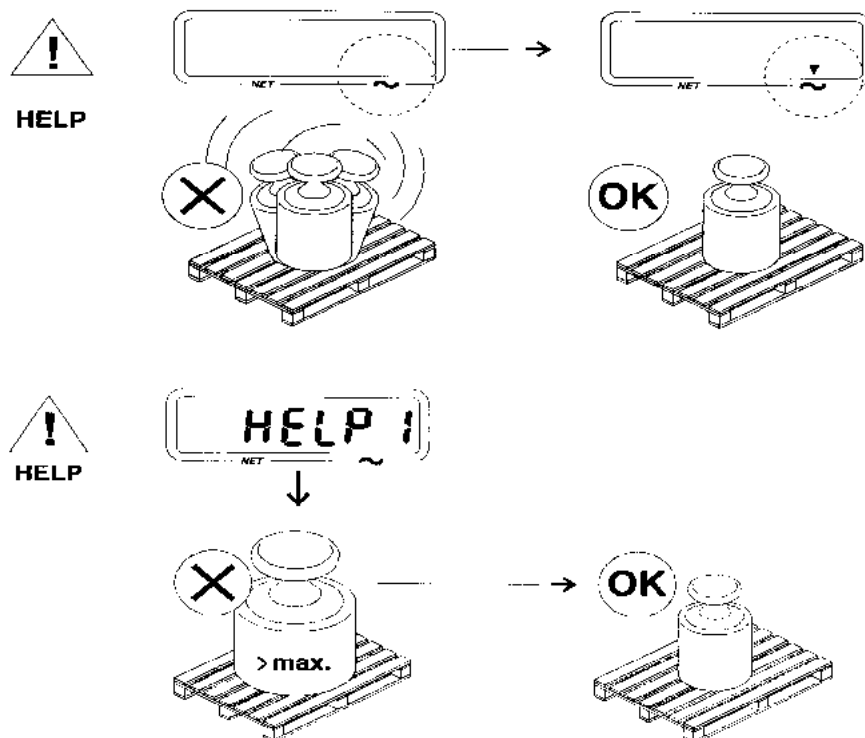


Fig. 14: Error message

6. Low battery indicator and battery replacement

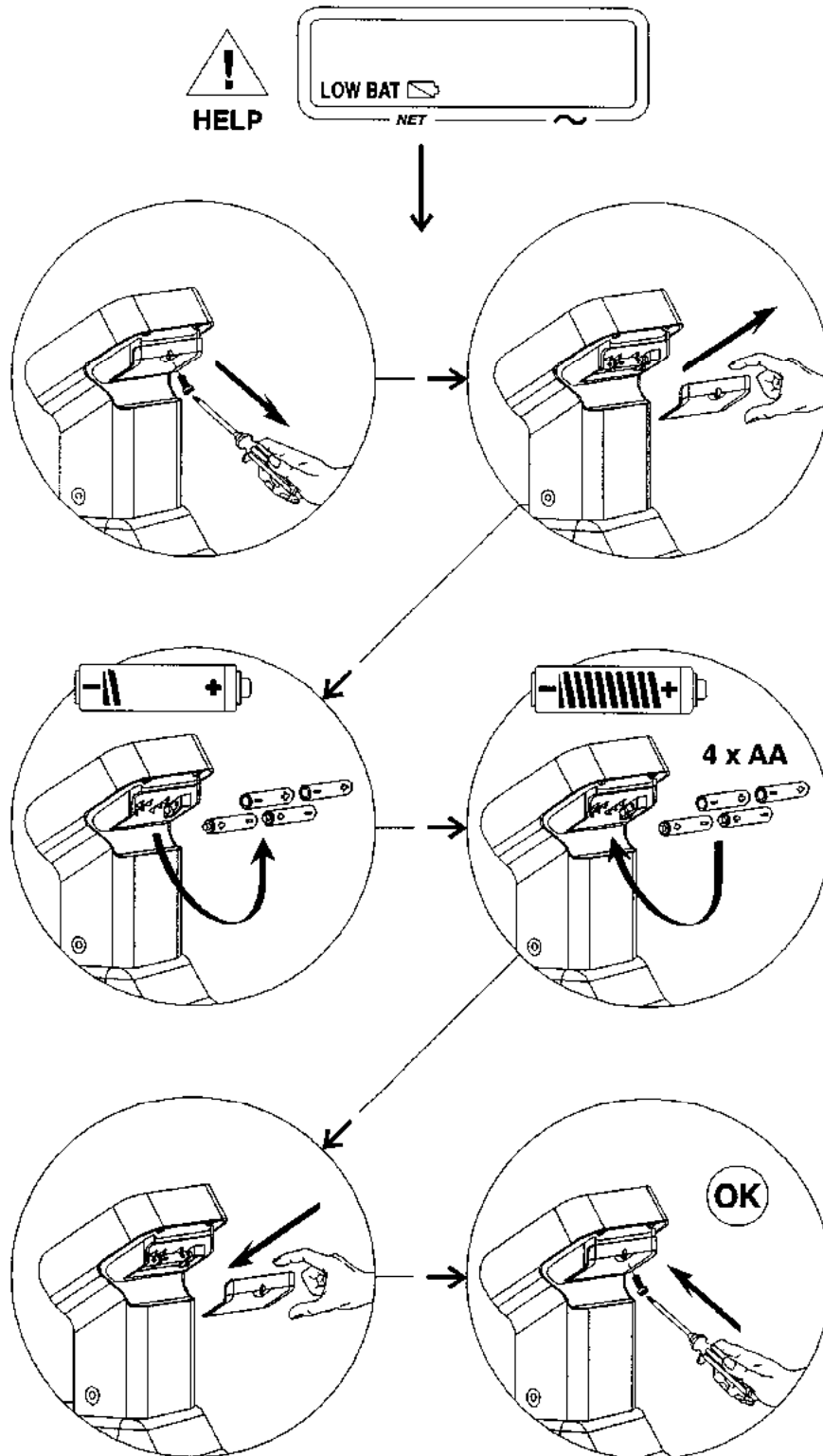


Fig. 15: Battery replacement

7. Reset and tare weight function

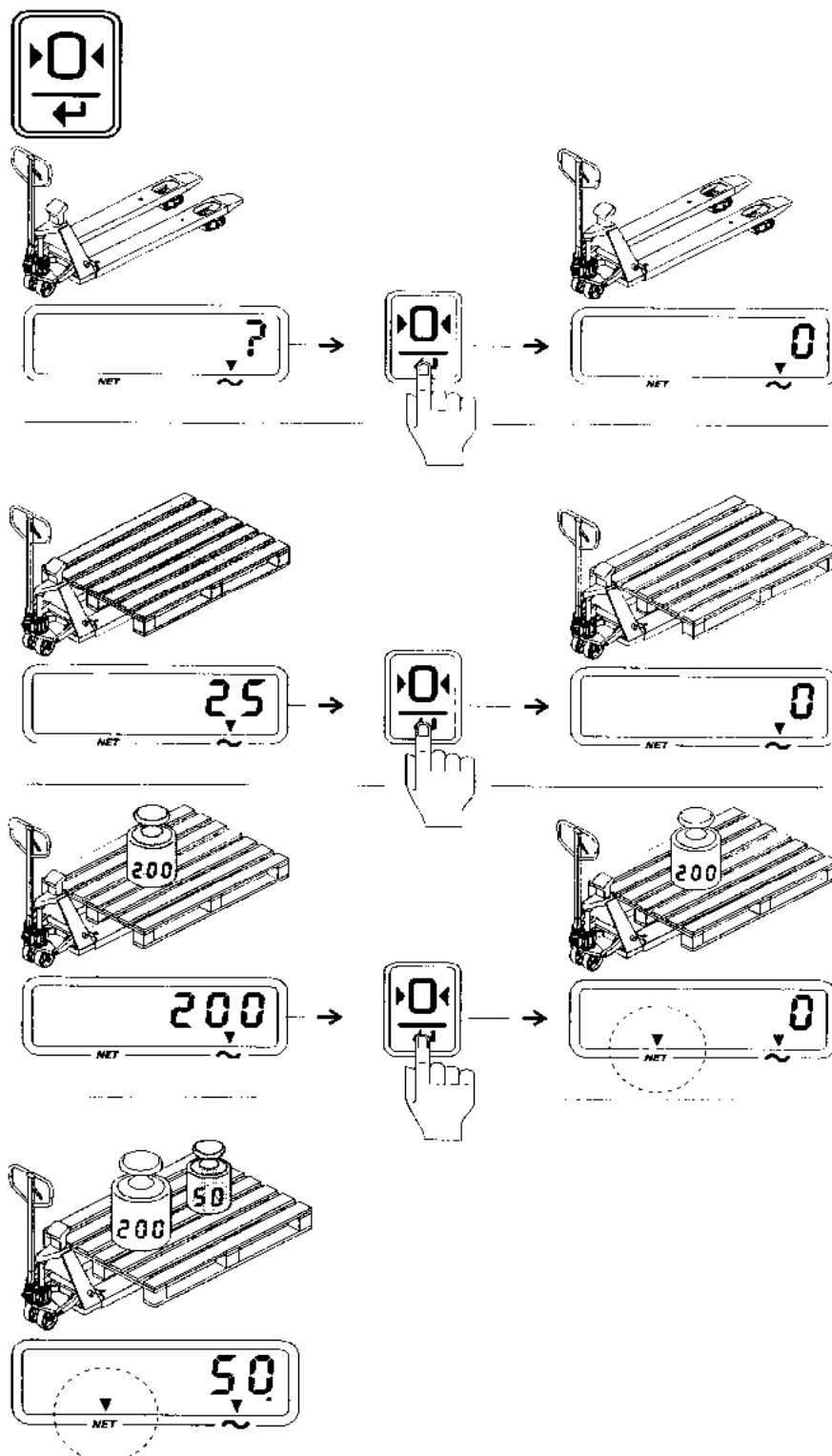


Fig. 16: Reset and tare weight function

8. Accumulative(total) function

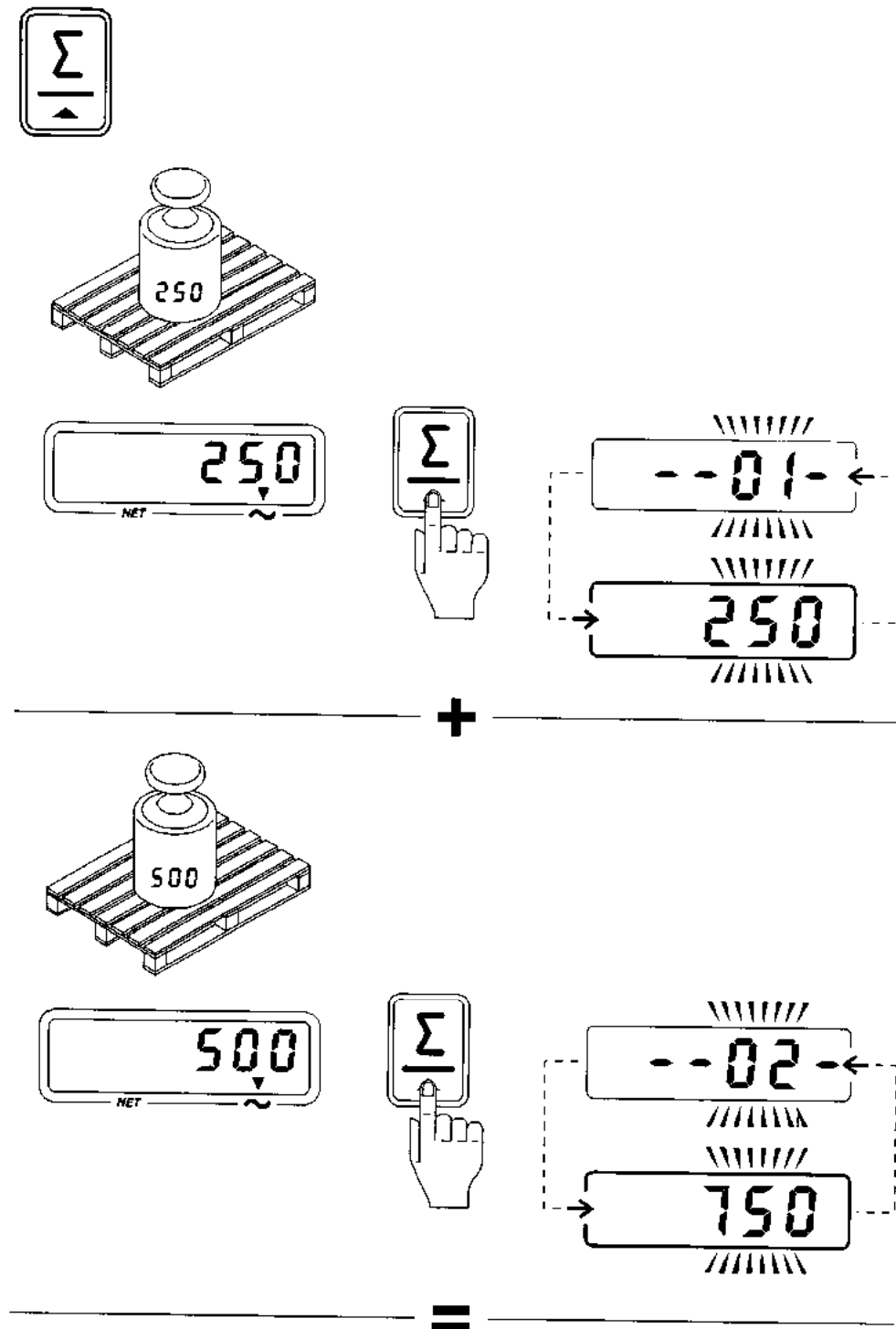


Fig. 17: Accumulative(total) function

9. Total and recovery conversion

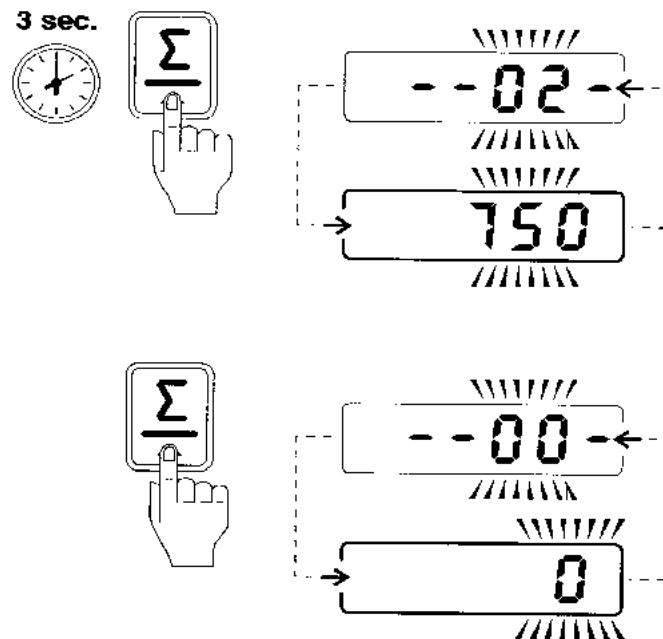


Fig. 18: Total and recovery conversion

8. BATTERY CHARGING AND REPLACEMENT



- Only qualified personnel are allowed to service or charge the batteries. The instructions of this handbook and from the battery-manufacturer must be observed.
- These batteries are maintenance free; re-filling is prohibited.
- Recycling of batteries undergoes national regulations. Please follow these regulations.
- By handling batteries, open fire is prohibited, gases could cause explosion!
- In the area of battery charging neither burning materials nor burning liquids are allowed. Smoking is prohibited and the area must be ventilated.
- Park the truck securely before starting charging or installing/changing the batteries
- Before finishing the maintenance work, make sure, that all cables are connected correctly and that there are no disturbing towards other components of the truck.

As standard batteries, the truck is equipped with following sealed liquid acid battery-types:

2 pc 12V/ 64Ah (2 pc 12V/85Ah is optional)



IT IS ONLY ALLOWED TO USE SEALED LIQUID ACID BATTERIES.

THE WEIGHT OF THE BATTERIES HAS AN INFLUENCE TO THE TRUCKS OPERATING BEHAVIOR.

PLEASE CONSIDER THE MAXIMUM OPERATING TEMPERATURE OF THE BATTERIES.

a. Replacement

Park the truck securely and switch off the truck with the combined emergency switch (3). Loosen the main cover with the 2 screws (19, fig. 19).

Unbolt the screws of the negative terminal (21, fig. 19) firstly, then unbolt the screws of the positive terminal (21, fig. 19) and put the cables aside.

Remove the battery and Place the new batteries according to fig. 19.

The installation is in the reverse order of the removal. Please connect the positive terminals firstly, otherwise the truck could be damaged.

Before replace the battery, please remove the load backrest and the weighing instrument first.

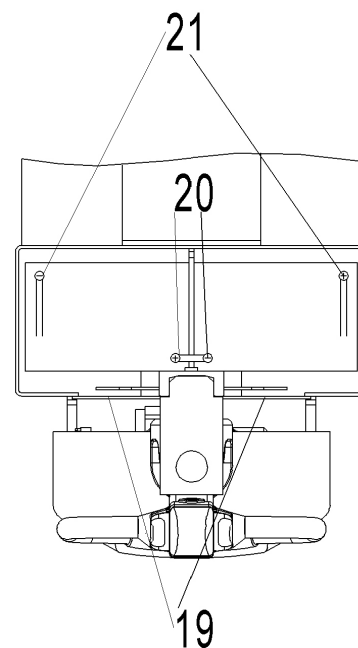


Fig. 19: Battery replacement

Remove the filling cover and seal the hydraulic oil tank by provided seal cap(22). After maintaining, please keep the seal cap for future use.

After seal the hydraulic oil tank by provided seal cap(22, fig. 20), firstly unbolt the screws of negative terminal(20,fig. 19) and then unbolt the screws of positive terminal(21,fig. 19), put the cables aside.

Unbolt the low screws of electric component plate(23, fig. 20), and then remove two fixing screw(24) and loose the second fixing screw(25).

Then rotate the assembly around the 2nd fixing screws (24) and secure it against falling with the safety bar (26).

Remove the battery fixing elements (27, fig. 20) and remove the batteries. Place the new batteries with the terminal-positions according to fig. 19.

The installation is in the reverse order of the removal. Please connect the positive terminals firstly, otherwise the truck could be damaged.

Before fixing the main cover, remove the closing cap (22) and assemble the standard cap.

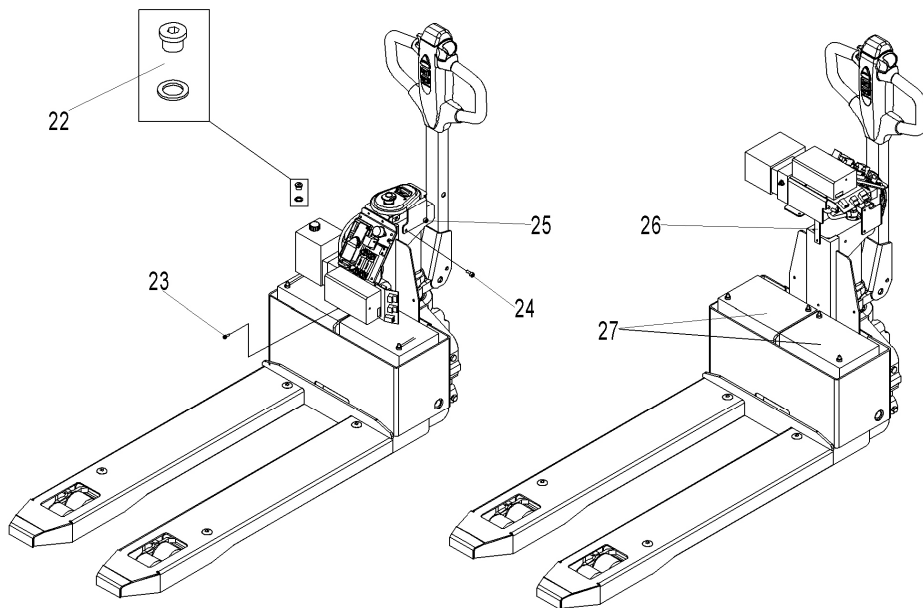
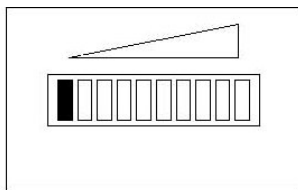


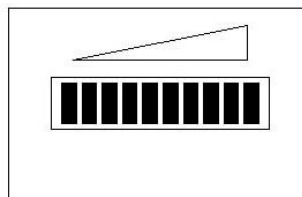
Fig. 20: Pre-work for battery replacement

b. Battery indicator

The discharge status is indicated by ten red LED segments.



Battery discharged



Battery full charged

Fig.21: Battery discharge indicator

- Only when the battery is properly charged, the most right LED lit. As the battery's state-of-charge decreases, successive LEDs light up, only one on at a time.
- The 2nd from left LED flashes, indicating "energy reserve" (70% depth of discharge).
- The 2 most left LEDs alternately flash, indicating "empty" (80% depth of discharge).

c. Charging



- The attached automatic charger is only available for the optional voltage of 110V or 220V as referred.
- The room, where you are charging must be ventilated.
- The exactly charge status can be only checked from the discharge indicator. To control the status, the charging must be interrupted and the truck must be started.

Park the truck at a dedicated secured area with a deidcated power supply.
Lower the forks and remove the load.

Switch the truck off and connect the main power connector to the power supply.

The charger starts charging the battery.

Charging is finished until the charging LED (fig.20) produces permanent green light. The charger then goes into a floating mode to prevent the battery against damages. Following table shows the function of the LED-status:

Table 4: LED-Status

LED- signal	Function
Red	Battery discharged
Orange	Charging
Green	Fully charged

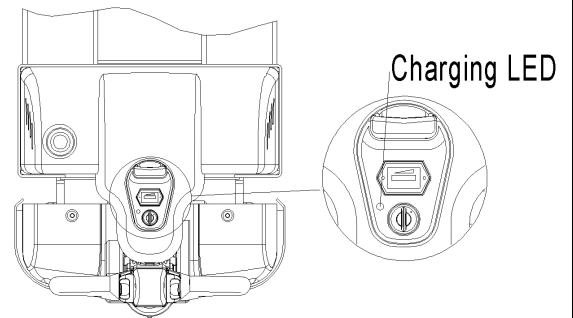


Fig. 22: LED- Status

When charging is finished, disconnect the connector from the socket and place it in the designated pocket.

9. REGULAR MAINTENANCE



- Only qualified and trained personnel are allowed to do maintenance on this truck.
- Before maintaining, remove the load from the forks and lower the forks to the lowest position.
- If you need to lift the truck, follow chapter 4 by using designated lashing or jacking equipment. Before working, put safety devices (for instance designated lift jacks, wedges or wooden blocks) under the truck to protect against accidental lowering, movement or slipping.
- Please pay attention to maintain the tiller arm. The gas pressure spring is pre-loaded by compression, carelessness can cause injury.
- Use approved and from your dealer released original spare parts.
- Please consider, that oil leakage of hydraulic fluid can cause failures and accidents.
- It is allowed to adjust the pressure valve only by trained service technicians.

If you need to change the wheels, please follow the instructions above. The castors must be round and they should have no abnormal abrasion.

Check the items emphasized maintenance checklist.

a. Maintenance checklist

Table 5: Maintenance checklist

	Interval		
	Monthly	6 Month	12 Month
Hydraulic			

1	Check the hydraulic cylinder, piston for damage noise and leakage	•		•
2	Check the hydraulic connections and hose for damage an leakage			•
3	Check the hydraulic oil level, refill if necessary			•
4	Refill the hydraulic oil after 1500 working hours			•
Mechanical system				
5	Check the forks for deformation and cracks			•
6	Checks the chassis for deformation and cracks			•
7	Check if all screws are fixed			•
8	Check the push rods for deformation and damages			•
9	Check the gearbox for noise and leakage			•
10	Check the wheels for deformation and damages			•
11	Lubricate the steering bearing			•
12	Lubricate the pivot points		•	
13	Lubricate the grease nipples	•		
Electrical system				
14	Check the electric wiring for damage			•
15	Check the electric connections			•
16	Test the Emergency button function			•
17	Check the electric drive motor for noise and damages			•
18	Test the display			•
19	Check the, if correct fuses are used			•
20	Test the warning signal			•
21	Check the contactors			•
22	Check the frame leakage (insulation test)			•
Battery				
23	Check the battery voltage			•
24	Check the terminals for corrosion and damage			•
25	Check the battery housing for damages			•
Charger				
26	Check the main power cable for damages			•
27	Check the start-up protection during charging			•
Function				
28	Check the horn function			•
29	Check the air gap of the electromagnetic brake			•
30	Test the emergency braking			•
31	Test the reverse and regenerative braking			•
32	Test the safety (belly) button function			•
33	Check the steering function			•
34	Check the lifting and lowering function			•
35	Check the tiller arm switch function			•
General				
36	Check if all decals are legible and complete			•
37	Carry out a test run			•

b. Lubricating points

Lubricate the marked points according to the maintenance checklist. The required grease specification is: DIN 51825, standard grease

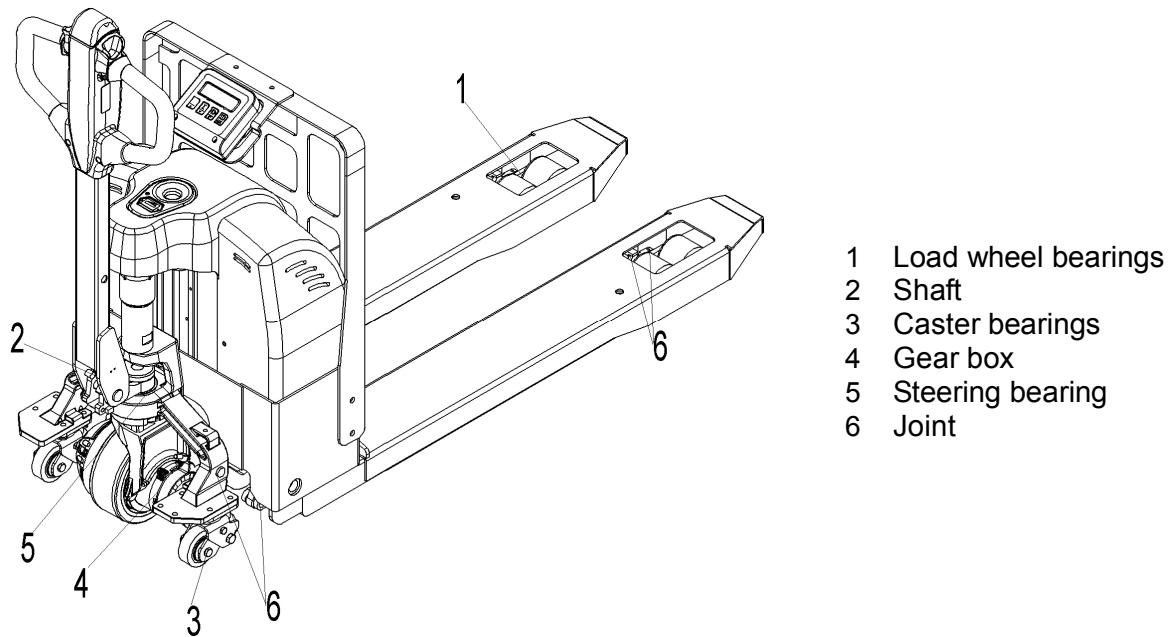


Fig. 23: Lubricating points

c. Check and refill hydraulic oil

The required hydraulic fluid- type is:

- H-LP 46, DIN 51524
- Viscosity is 41.4 - 47

Waste material like oil, used batteries or other must be probably disposed and recycled according to the national regulations and if necessary brought to a recycling company.

Loosen the 2 screws for the main cover and remove the cover.

The minimum and maximum allowed oil level can be checked on the oil tank (fig. 22).

If necessary add oil at the filling point, it's about 0.7L-1.0L.

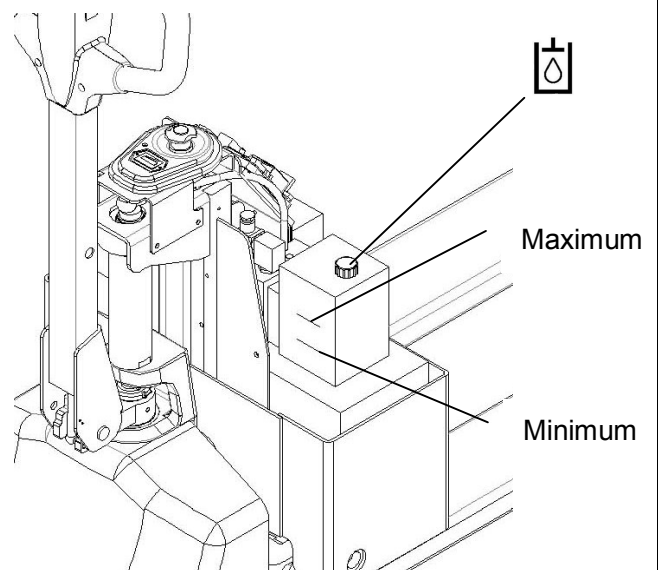


Fig. 24: Oil level

d. Checking electrical fuses

Remove the main cover. The fuses are located according to fig. 24.

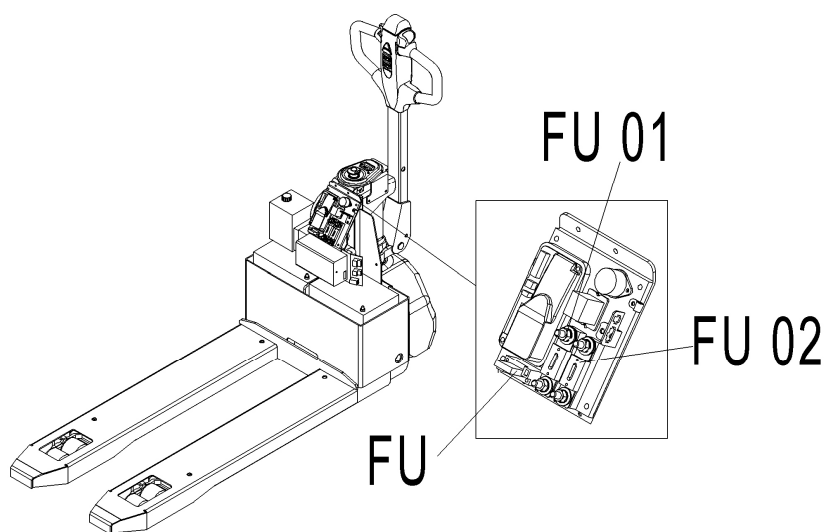


Fig. 25: Fuses location

Table 6: Fuses size

	Size
FU	10A
FU 01	60A
FU 02	60A

10. TROUBLE SHOOTING



- If the truck has malfunctions follow the instructions, mentioned under chapter 6.

Table 7: Trouble shooting

TROUBLE	CAUSE	REPAIR
Load can't be lifted	Load weight too high	Lift only the max. capacity, mentioned on the ID-plate
	Battery discharged	Charge the battery
	Lifting fuse faulty	Check and eventually replace the lifting fuse
	Low hydraulic oil level	Check and eventually refill hydraulic oil
	Oil leakage	Repair the hoses and/or the sealing of the cylinder
Oil leakage from	Excessive quantity of oil.	Reduce oil quantity.

air breathing		
Truck not starts operating	Battery is charging	Charge the battery completely and then remove the main power plug form the electrical socket.
	Battery not connected	Connect the battery correctly
	Fuse faulty	Check and eventually replace fuses
	Low battery	Charge the battery
	Combined emergency switch is activated	De-activate the combined emergency switch by insert and pull the knob.
	Tiller in the operating zone	Move the tiller firstly to the braking zone.
Weighing not correct	The screw rubs the frame Cover plate rubs the frame	Adjusting the screw Replace the cover plate
No display	-Low battery	-Replace a new battery -Charge

If the truck has malfunctions and can't be operated out of the working zone, jack the truck up and go with a load handler under the truck and safe the truck securely. Then move truck out of the aisle.

b. Hydraulic circuit

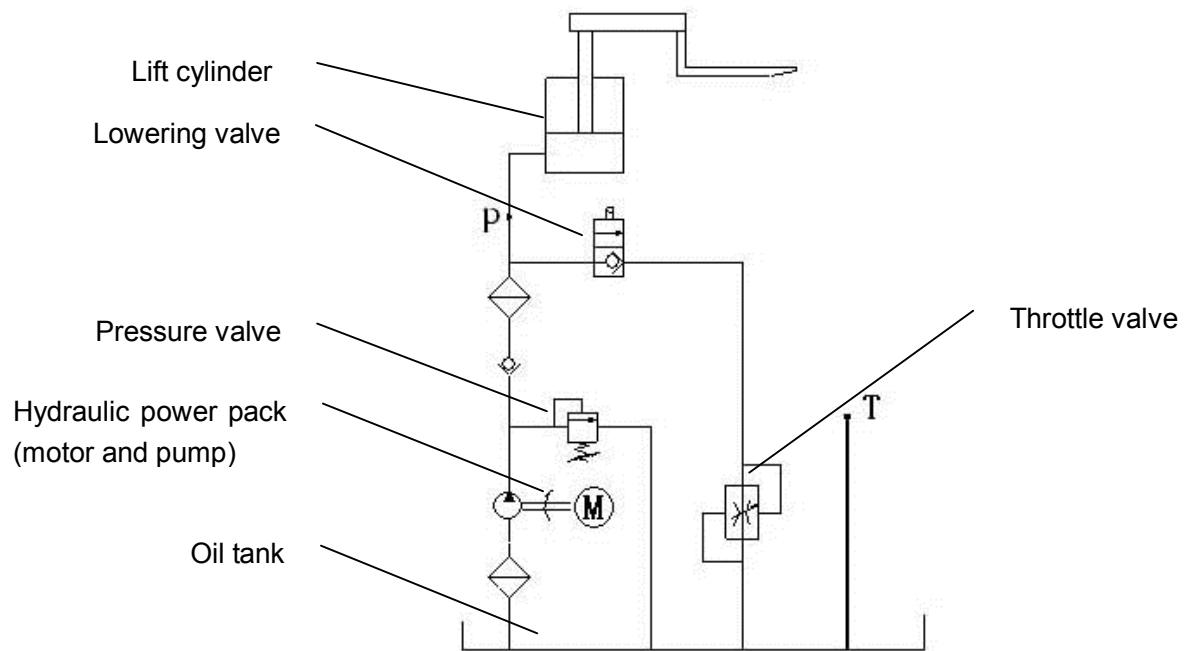


Fig. 27: Hydraulic circuit

12. DECLARATION OF CONFORMITY (valid, if sold within the EU)

[GB] CE Declaration of Conformity

The signatory hereby declares that the specified machine conforms to the EU Directive 2006/42/EC (Machine Directive) and 2014/30/EEC (Electro-Magnetic Compatibility, EMC) including their amendments as translated into national legislation of the member countries. The signatory is individually authorized to compile the technical documents.

[D] EG-KONFORMITÄTSERKLÄRUNG

Der Unterzeichner bescheinigt hiermit, dass die im Einzelnen bezeichnete Maschine den Europäischen Richtlinien 2006/42/EG (Maschinenrichtlinie) und 2014/30/EG (Elektromagnetische Verträglichkeit - EMV) einschließlich deren Änderungen sowie dem entsprechenden Rechtserlaß zur Umsetzung der Richtlinien in nationales Recht entspricht. Der Unterzeichner ist bevollmächtigt, die technischen Unterlagen zusammenzustellen.

[E] DECLARACIÓN DE CONFORMIDAD CE

El signatario certifica por medio de la presente que la máquina especificada cumple con las Normas Europeas 2006/42/CE (Normativa para maquinarias) y 2014/30/CE (Compatibilidad electromagnética), incluyendo sus respectivas modificaciones, así como con el decreto-ley para la adaptación de las normas al derecho nacional. El signatario dispone de una autorización individual que le permite compilar la documentación técnica.

[F] DECLARATION DE CONFORMITE CE

Par la présente déclaration, les soussignés certifient que le machines spécifié ci-dessus est conforme à la loi et aux directives européennes 2006/42/CE (directive sur les machines) et 2014/30/CEE (compatibilité électromagnétique - CEM), y compris aux modifications qui y sont apportées et à l'arrêté autorisant sa transposition en droit national. Chaque signataire est habilité à établir individuellement la documentation technique.

[NL] EG-CONFORMITEITSVERKLARING

Ondergetekenden verklaren hierbij dat - volgens de nationale wetgeving van de Lidstaten - de hierboven vermelde opgegeven machina beantwoordt aan de bepalingen qua veiligheid bij machines (EG richtlijn 2006/42/EC) en electro-magnetische compatibiliteit (EG richtlijn 2014/30/EEC).

Ondergetekenden zijn ieder individueel gemachtigd het technisch dossier samen te stellen.

[P] DECLARAÇÃO DE CONFORMIDADE CE

Pela presente, os signatários certificam que o máquina especificado está conforme às Directivas Europeias 2006/42/CE („Máquinas“) e 2014/30/CEE („Inocuidade Electromagnética - IEM“), incluindo as alterações das mesmas e o respectivo decreto-lei para a transposição em lei nacional. Cada um dos signatários está autorizado a proceder à elaboração da documentação técnica.

[I] DICHIARAZIONE DI CONFORMITÀ CE

I sottoscritti dichiarano che il veicolo per trasporti interni a macchina specificato soddisfa le Direttive Europee 2006/42/EC (Direttiva Macchine) e 2014/30/EEC (Compatibilità elettromagnetica - EMV) comprese le relative modifiche, come pure il rispettivo decreto legislativo per la conversione delle direttive in diritto nazionale. I sottoscritti sono singolarmente autorizzati alla creazione della documentazione tecnica.

[BG] ЕВРОПЕЙСКА ОБЩНОСТ - ДЕКЛАРАЦИЯ ЗА СЪОТВЕТСТВИЕ

Подписаните удостоверяват с настоящето, че подробно описаното машина средство отговаря на европейския норматив 2006/42/EG (норматив за машини) и на 2014/30/EG (електро-магнетична съвместимост), включително с техните промени, както и на съответния указ за прилагане на нормативите в националното право. Подписаните при това са упълномощени поотделно да съставят техническата документация.

[CZ] EG - PROHLÁŠENÍ O SHODĚ

Níže podepsaný tímto potvrzuje, že podrobný popis uvedený stroje odpovídá Evropským směrnicím 2006/42/EC (směrnice pro stroje) a 2014/30/EEC (elektromagnetická interference - EMV) včetně jejich pozdějších úprav, jakož i příslušným právním výnosům pro uplatnění příslušné směrnice v rámci národního práva. Každý z podepsaných jsou jednotlivě způsobilí k vytvoření technických podkladů.

[DK] EF-OVERENSSTEMMELSEERKLÆRING

Undertegnede attesterer hermed, at det specificerede maskine stemmer overens med de Europæiske Direktiver 2006/42/EU (maskindirektiv) og 2014/30/EØF (elektromagnetisk kompatibilitet - EMC) samt med den modsvarende lovgivning til implementering af direktiver i den nationale lovgivning. De undertegnede er hver for sig beføjede til at sammenstille de tekniske dokumenter.

[EST] EL vastavusavaldus

Allakirjutatud tõendavad käesolevaga, et üksikasjaliselt kirjeldatud täpsustatud masin vastab Euroopa direktiividele 2006/42/EÜ (Direktiiv masinate kohta) ja 2014/30/EMÜ (Elektromagnetilise sobivus - EMS) kaasa arvatud nende muudatused ja nende vastavatele õigusmäärustele direktiivide muutmiseks siseriiklikuks õiguseks. Iga allakirjutatu üksikult on volitatud koostama tehnilist dokumentatsiooni.

[FIN] EU-YHDENMUKAISUUSSELÖSTYS

Allekirjoittaneet todistavat täten, että kukin erikseen mainittu omalla voimanolähteellä varustettu tehdaskone vastaa EU-direktiivien 2006/42/EC (koneenrakennusdirektiivi) ja 2014/30/EEC (sähkömagneettinen yhteensopivuus – EMC) määräyksiä sekä niiden muutoksia ja niiden kansalliseen lainsäädäntöön soveltamista koskevaa oikeussäätöä. Jokaisella allekirjoittaneista on oikeus itsenäisesti laatia asiaankuuluvia teknisiä asiakirjoja.

[GR] ΔΗΛΩΣΗ ΣΥΜΜΟΡΦΩΣΗΣ ΕΟΚ

Οι υπογράφωντες βεβαιώνουν διά της παρούσης ότι το συγκεκριμένο μηχάνημα συμμορφώνεται προς την Κοινοτική Οδηγία 2006/42/ΕΚ («Μηχανήματα») και 2014/30/ΕΟΚ (Ηλεκτρομαγνητικής Συμβατότητας, ΗΜΣ), καθώς και οι τροποποιήσεις τους, όπως μεταφράστηκε στην εθνική νομοθεσία των χωρών μελών. Οι υπογράφωντες είναι σε κάθε περίπτωση εξουσιοδοτημένοι ατομικά να καταρτίσουν τα τεχνικά έγγραφα.

[H] EU KONFORMITÁSI NYILATKOZAT

Alulírottak ezennel igazolják, hogy a részletesen leírt a megadott gép megfelel a 2006/42/EC (Gép-Írányelv) és a 2014/30/EEC (Elektromágneses összeférhetőség - EMV) Európai Irányelveknek, beleértve azok módosításait, valamint az irányelvek nemzeti jogba történő átültetésére irányuló megfelelő jogi rendelkezést. Továbbá az alulírottak mindegyike rendelkezik meghatalmazással arra nézve, hogy összeállíthatja a műszaki dokumentációt.

[LT] ES atitikimø deklaracija

Žemiau pasirašę asmenys patvirtina, kad atskirai aprašytas nurodyta mašina atitinka Europos Sąjungos direktyvas 2006/42/EB (Mašinų direktyva) ir 2014/30/EEB (Elektromagnetinis suderinamumas – EMS) įskaitant jų pakeitimus, o taip pat ir atitinkamą teisės aktą dėl direktyvų įgyvendinimo nacionalinėje teisėje. Kiekvienas iš pasirašusių asmenų turi teisę ruošti techninę dokumentaciją.

[LV] ES atbilstības deklarācija

Ar zemāk redzamajiem parakstiem tiek apliecināts, ka norādīts mašina atbilst Eiropas Savienības normatīviem 2006/42/EG (Mašīnu normatīvas) un 2014/30/EVG (Elektromagnētiskā atbilstība – EMV), ieskaitot to izmaiņas, kā arī atbilstošos tiesiskos rīkojumus normatīvu pielāgošanai nacionālajai likumdošanai. Parakstu īpašnieki ir atsevišķi pilnvaroti sastādīt tehniskās dokumentācijas.

[N] EU-KONFORMITETSERKLÆRING

Undertegnede bekrefter hermed at de enkelte betegnede maskin med kraftdrift tilsvare de europeiske retningslinjene 2006/42/EC (maskinretningslinje)

og 2014/30/EEC (elektromagnetisk fordraglighet - EMV) inklusiv disses endringer og den tilsvarende rettsforordning til omsetning av nasjonal rett. Hver undertegnede er fullmektig til å sette sammen de tekniske dokumentene.

[PL] DEKLARACJA ZGODNOŚCI Z NORMAMI UE

Niżej podpisani potwierdzają niniejszym, że opisany tutaj, napędzany określona maszyna spełnia wymagania określone w dyrektywach Europejskich 2006/42/EC (Maszyny) i 2014/30/EEC (Nieszkodliwość elektromagnetyczna - EMC) wraz z ich późniejszymi zmianami oraz odpowiednimi rozporządzeniami mającymi na celu przekształcenie tych dyrektyw w prawo krajów członkowskich. Niżej podpisani są pojedynczo upoważnieni do zestawiania dokumentacji technicznej.

[RO] DECLARATIE DE CONFORMITATE CE

Subsemnatii adevăresc prin prezenta că vehiculul de specificat mașină descris individual corespunde directivelor europene 2006/42/CE (Directiva privind mașinile) și 2014/30/CEE (Compatibilitatea electromagnetică - CEM) inclusiv modificărilor lor precum și actului legislativ corespunzător pentru transpunerea directivelor în drept național. Subsemnatii sunt fiecare în parte împuterniciți să întocmească documentația tehnică.

[RUS] Декларация соответствия стандартам ЕС

Настоящим лица, подписавшие документ, удостоверяют, что машина с указанной спецификацией соответствует европейским стандартам 2006/42/EG (Транспортная директива) и 2014/30/EWG (Электромагнитная совместимость - EMC), включая изменения в них, а также соответствующим национальным стандартам и нормам. Каждое по отдельности лицо, подписавшее документ, имеет полномочия для составления технической документации.

[S] EG-KONFORMITÄTSFÖRKLARING

Undertecknarna intygar härmed att det i detalj betecknade maskin uppfyller de Europeiska direktiven 2006/42/EG (Maskindirektiv) och 2014/30/EEG (Elektromagnetisk tålighet - EMV), inklusive ändringarna i detta och den motsvarande rättsförordningen för att omsätta direktiven i nationell rätt. Undertecknarna har var för sig fullmakt att sammanställa den tekniska dokumentationen.

[SK] vyhlásenie o zhode

Dolu podpísaní týmto potvrdzujeme, že podrobný popis uvedeného stroje zodpovedá Európskym smerniciam 2006/42/EC (ernica pre stroje) a 2014/30/EWG (elektromagnetická tolerancia – EMV) vrátane jeho neskorších úprav, rovnako zodpovedá aj príslušným právnym nariadeniam na uplatnenie smerníc v rámci národného práva. Každý z podpísaných je jednotlivú splnomocnený na vytvorenie technických podkladov.

[SLO] EU IZJAVA O SKLADNOSTI

Podpisani s tem potrjujemo, da posamično označeno določeno stroj vozilo odgovarja Evropski direktivi 2006/42/EC (Direktiva o strojih) in 2014/30/EEC (Elektromagnetna skladnost - EMV) vključno z njihovimi spremembami ter ustrezno pravno uredbo o prevzemu smernic v nacionalno pravo. Podpisniki so vsakokrat posamezno pooblašeni za izdajanje tehnične dokumentacije.

[TR] AB Uygunluk Açıklaması

İmza sahibi şahıslar, ayrıntıları belirtilen makine aracının, 2006/42/EC (Makine Yönergesi) ve 2014/30/EEC (Elektromanyetik Uyumluluk – EMC) no'lu Avrupa Yönergelerine ve bunların değişiklik sonucu oluşan metinlerine ve yönergelerin milli hukuk hükümlerine dönüştürülmesine dair ilgili hukuk kararnamesine uygun olduğunu tasdik ederler. İmza sahibi şahıslar teknik dosyaları bir araya getirmek için münferiden vekil tayin edildi.

- (1) Type/ Typ/ Tipo/ Modello/ Tyypit/ Tipo / ΤΥΠΟΣ/ Tipus/ Tip/ Тип/ Tips/ Tipas/ Tüüp:
- (2) Serial No./ Serien-Nr./ N°. de série/ Seriennummer/ N° de serie/ Numero di serie/ Serienr./ Sarjanro/ αυξάνων αριθμός/ Seriové číslo/ Szériaszám/ Nr.Seryjny/ Serijska številka/ Výrobné číslo/ Серийный номер/ Seri No./ Seerianr./ Sērijas Nr./ Serijos numeris:
- (3) Year of constr./ Baujahr/ Année de constr./ Bouwjaar/ Año de constr./ Anno di costruzione/ Produktionsår/ Byggeår/ Tillverkningsår/ Valmistusvuosi / Ano de fabrico / έτος κατασκευής/ Rok výroby/ Gyártási év/ Rokprodukcji / Letnik / Год изготовления / Üretim yılı / Väljålaskeasta / Izgatavošanas gads / Gamybosmetai
- (4) Manufacturer or his authorized representative in Community/ Hersteller oder in der Gemeinschaft ansässiger Vertreter/ Fabricant ou son mandataire établi dans la Communauté/ Fabrikant of zijn in de Gemeenschap gevestigde gemachtigde/ Fabricante o representante establecido en la Comunidad/ Construtor ou Representante estabelecido na Comunidade/ Costruttore oppure il suo rappresentante nella Comunità/ Fabrikant eller dennesi Fællesskabet etablerede befuldmægtigede/ Producent eller agent innen felleskapet/ Tillverkare eller representant inom EU/ Valmistaja tai yhteisömaassa oleva edustaja / V'robce nebo jeho zastoupení/ Gyártó / producent albo jego przedstawiciel w EG (Wspólnota Europejska)/ Κατασκευαστής ή όκνηνο ήπιηθώλ αληηπξνζώπσλ/ Üretici ya da Bölgedeki Yetkili Temsilci/ Proizvajalec ali pooblašeni zastopnik s sedežem v EU/ Výrobca alebo zástupca so stálym bydliskom v EÚ / Изготовитель или его представитель, зарегистрированный в стране Содружества/ Tootja või organisatsioonits paiknev esindaja/ Ražotājs vai vietējais uzņēmuma pārstāvis / Gamintojas arba šalyje reziduojantis atstovas:
- (5) Date/ Datum/ Data/ Fecha/ datum/ Dato/ päiväys/ Kuupäev/ Datums/дата / Datum/ dátum/ tarih/ ημερομηνία
- (6) Authorised signatory/ Im Auftrag/ pour ordre/ Incaricato/ Por orden de/ por procuração/ op last van/ på vegne af/ på uppdrag/ Etter oppdrag/ psta./ Ülesandel / pavedus / v.i. / По поручению / megbízásából / длъжностно лице / z pověřením / z poverenia / po nalogu / na polecenie / din sarcina / adina / θαη' εληνι

(1) Type: **XX XX – Sample**

(2) Serial No: **XXXXXXXX**

(3) Year of constr.: **YYYY**

(4) Manufacturer or his authorized representative in Community:
Company name/ Street / Postal code Town/ Country

(5) Date: **YYYY-MM-DD**

(6) Authorized signatory: **Mr. Sample**